

Halifax Estates

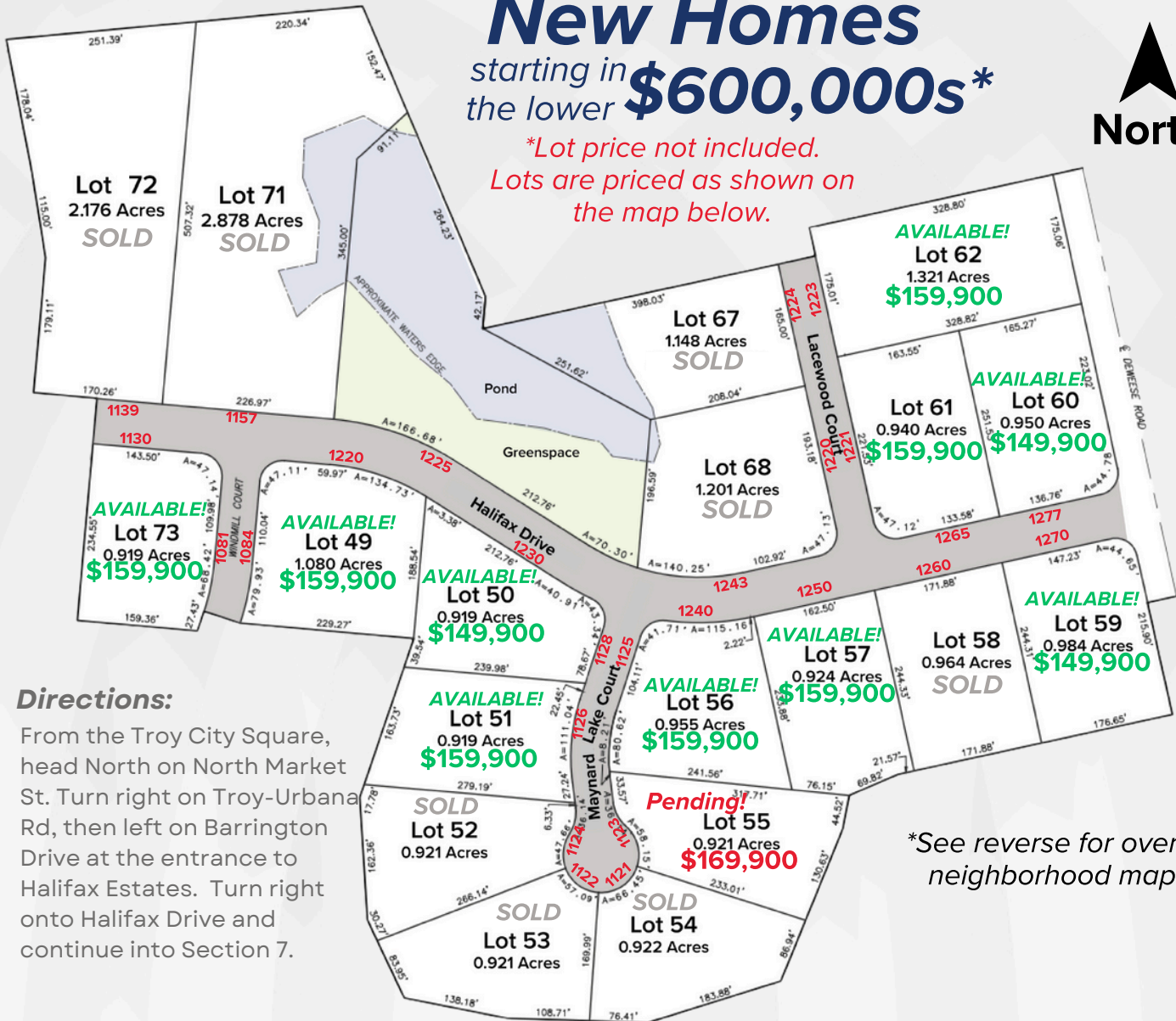
Section 7

Troy, Ohio

Updated: 08/05/2025

New Homes
starting in
the lower **\$600,000s***

**Lot price not included.
Lots are priced as shown on
the map below.*



Directions:

From the Troy City Square, head North on North Market St. Turn right on Troy-Urbana Rd, then left on Barrington Drive at the entrance to Halifax Estates. Turn right onto Halifax Drive and continue into Section 7.

See reverse for overall neighborhood map

Harlow
BUILDERS INC

701 N. Market Street | Troy, Ohio 45373
937-339-9944 | sales@harlowbuilders.com
www.harlowbuilders.com

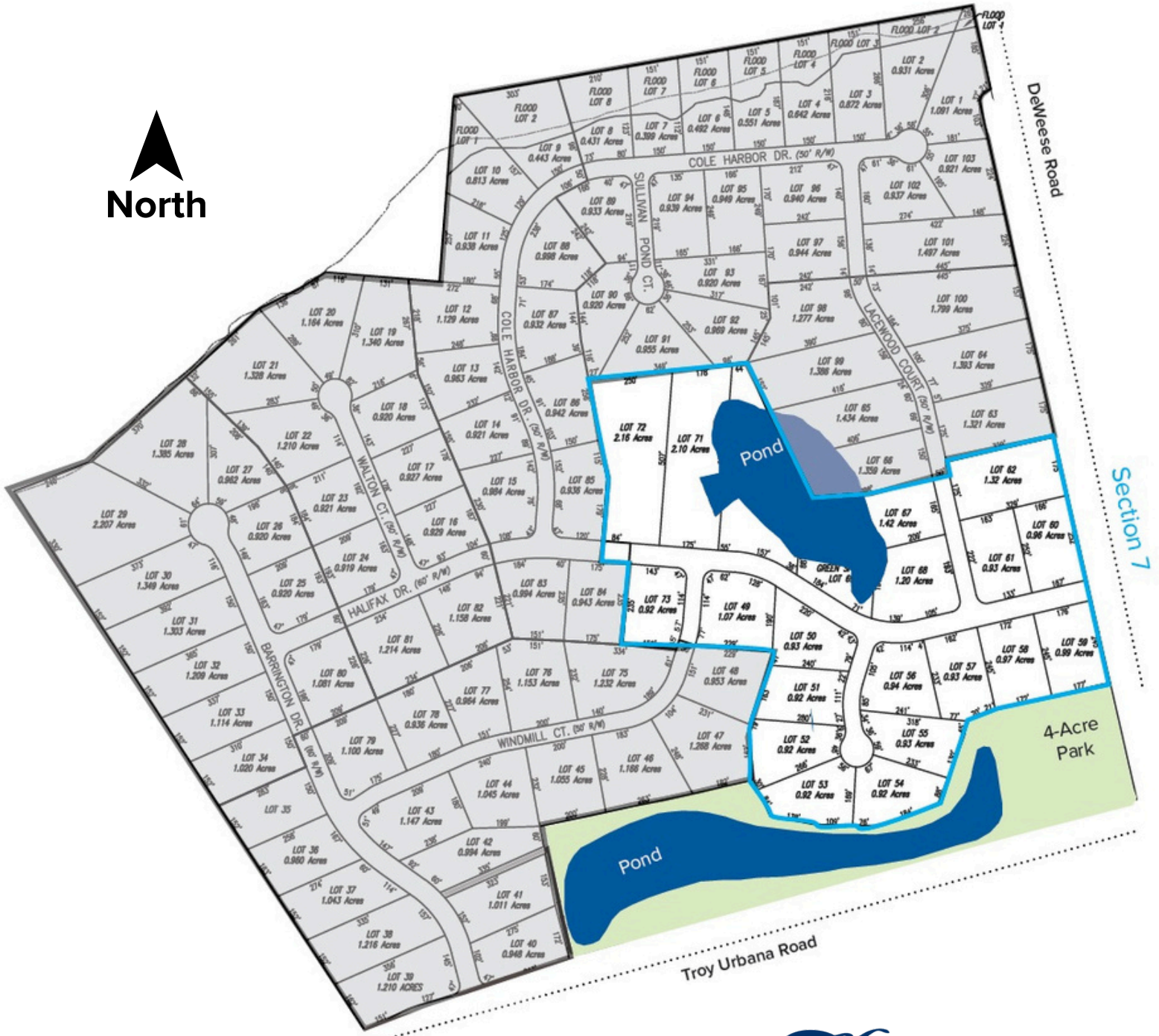
Community features:

- Oversized Homesites (One Acre+)
- Neighborhood park with gazebo, shelter, playground, 2 ponds, and walking trails
- Home Size Minimum Requirements:
 - 2000 SF - Single Story
 - 2300 SF - Multi-Story
- Public Sidewalks
- Miami East School District

Halifax Estates

Troy, Ohio

Overall Neighborhood



Directions:

From the Troy City Square, head North on North Market St. Turn right on Troy-Urbana Rd, then left on Barrington Drive at the entrance to Halifax Estates.

Harlow
BUILDERS INC

701 N. Market Street | Troy, Ohio 45373
937-339-9944 | sales@harlowbuilders.com
www.harlowbuilders.com