

Halifax Estates

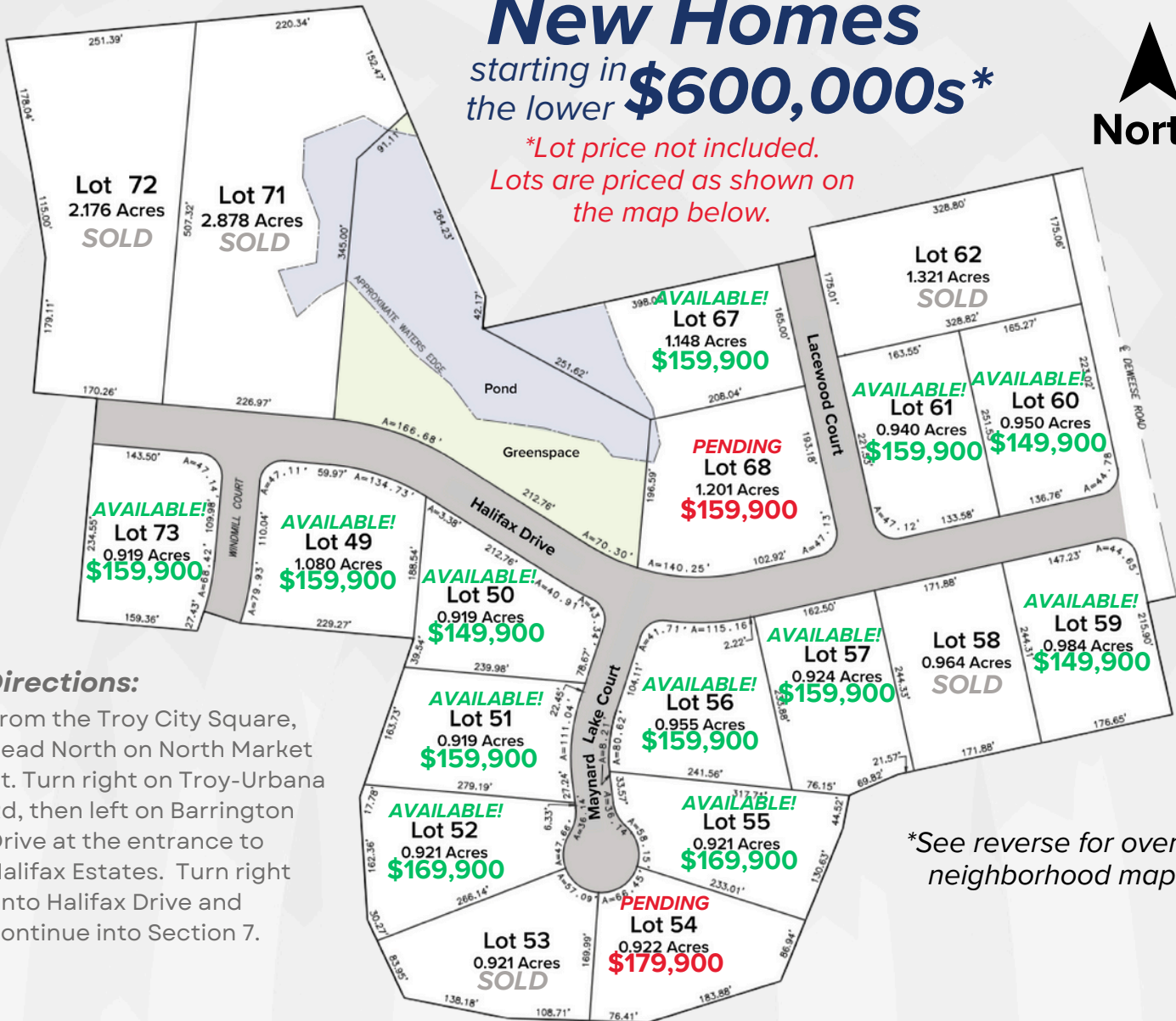
Section 7

Troy, Ohio

Updated: 10/14/2024

New Homes
starting in the lower **\$600,000s***

**Lot price not included.
Lots are priced as shown on
the map below.*



Directions:

From the Troy City Square, head North on North Market St. Turn right on Troy-Urbana Rd, then left on Barrington Drive at the entrance to Halifax Estates. Turn right onto Halifax Drive and continue into Section 7.

See reverse for overall neighborhood map

Community features:

- Oversized Homesites (One Acre+)
- Neighborhood park with gazebo, shelter, playground, 2 ponds, and walking trails
- Home Size Minimum Requirements:
 - 2000 SF - Single Story
 - 2300 SF - Multi-Story
- Public Sidewalks
- Miami East School District

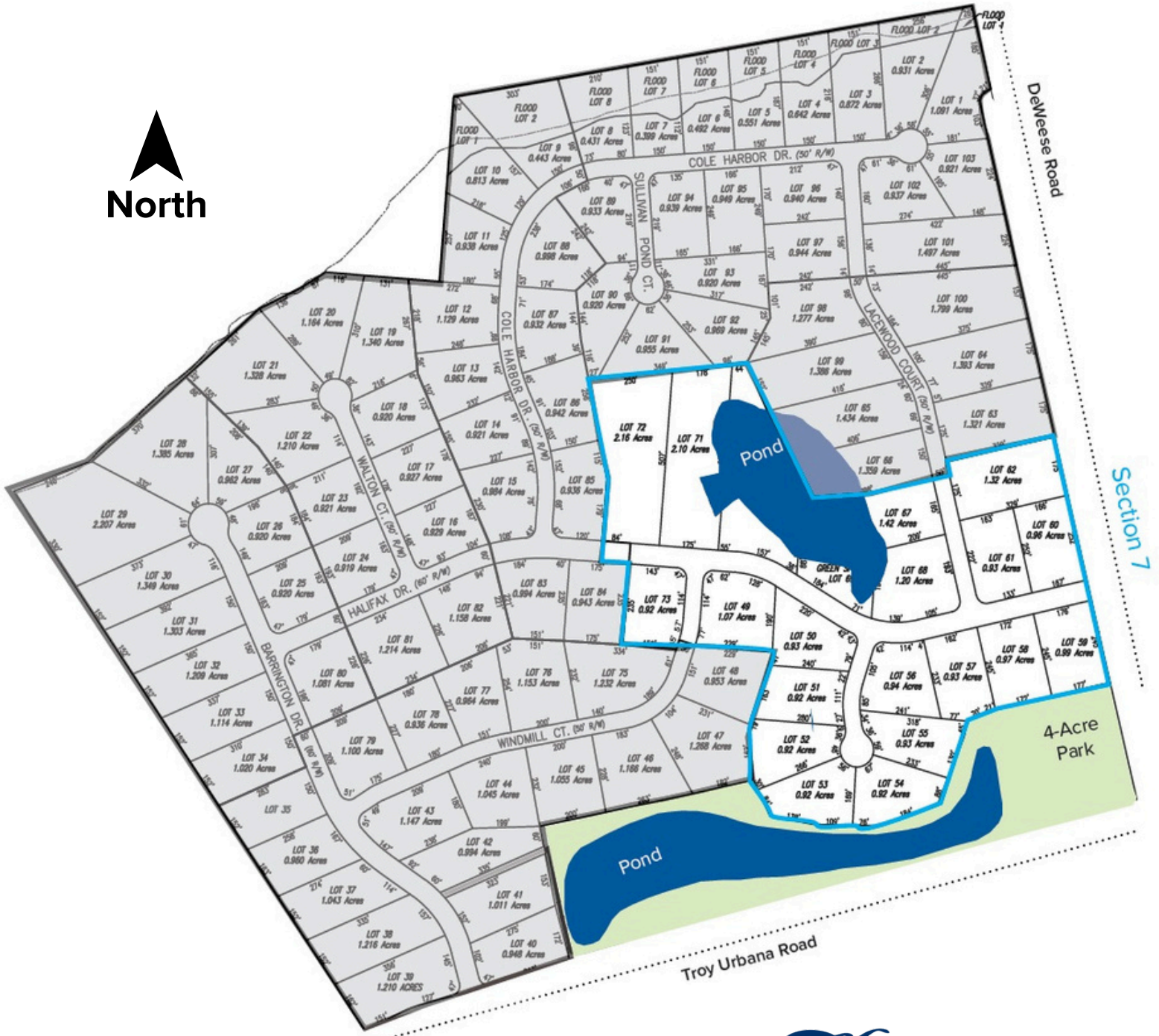
Harlow
BUILDERS INC

701 N. Market Street | Troy, Ohio 45373
937-339-9944 | sales@harlowbuilders.com
www.harlowbuilders.com

Halifax Estates

Troy, Ohio

Overall Neighborhood



Directions:

From the Troy City Square, head North on North Market St. Turn right on Troy-Urbana Rd, then left on Barrington Drive at the entrance to Halifax Estates.

Harlow
BUILDERS INC

701 N. Market Street | Troy, Ohio 45373
937-339-9944 | sales@harlowbuilders.com
www.harlowbuilders.com