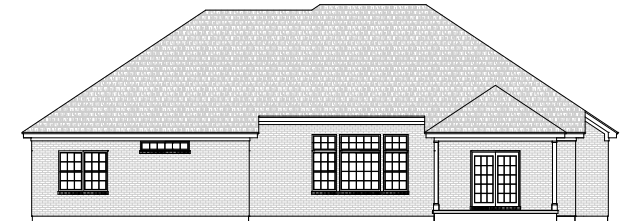




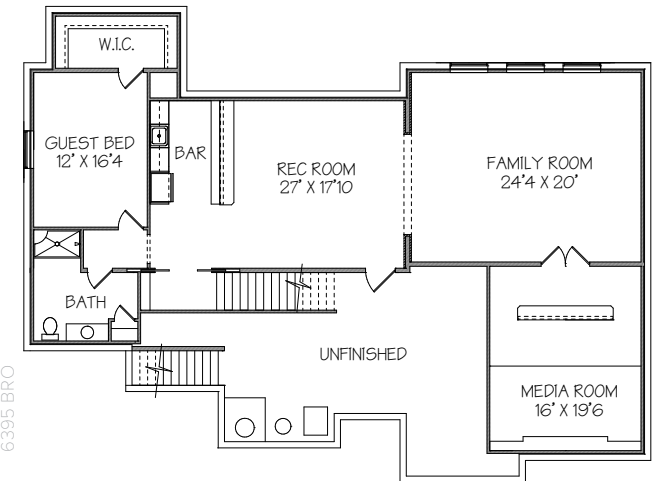
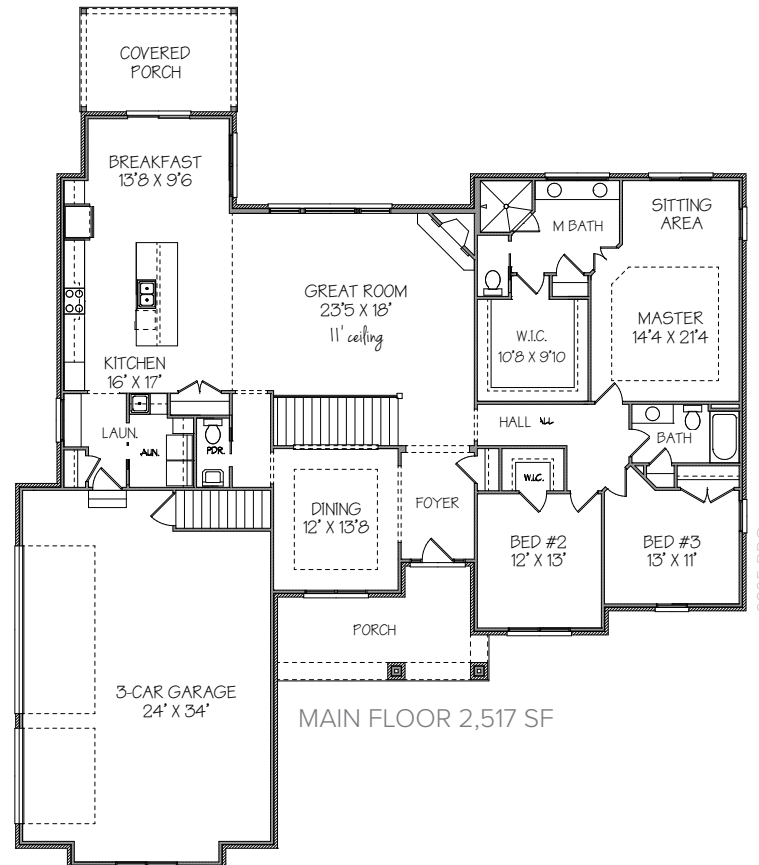
## The Glendale

1060 Windmill Dr. Troy, OH 45373

**\$549,900**



- 2,517 SF Main  
(+ 1,805 lower = 4,322 Living SF)
- 4 bedrooms
- 3.5 Bathrooms
- 3 car Side-Load Garage
- Fireplace
- Eat-in kitchen w/  
granite counter tops
- 11' ceiling in great room
- 9' walls first floor
- Rear covered porch with  
Lake Views
- Lit tray ceiling in foyer and  
master bedroom
- On 1.15 Acre corner lot
- Miami East Schools



LOWER LEVEL 1,805 SF FINISHED



O: 937.339.9944 • M: 937.603.0513 • 701 N. Market St, Troy OH 45373 • sales@harlowbuilders.com • HarlowBuilders.com

Harlow Builders reserves the right to modify plans without notice. Homes with basements can be fully, partially or completely unfinished. ©2017 Harlow Builders, Inc.